



**Meath Crescent, London, E2**

**BUTLER & STAG**





# Impressive one bedroom fifth floor apartment with park views, conveniently located between Mile End station and Victoria Park.



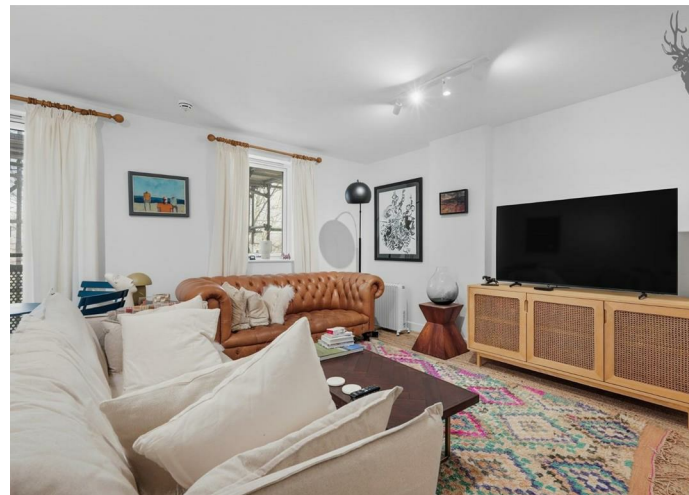
- Modern One Bedroom Fifth Floor Apartment
- Over 600sqft of Living Space
- Balcony with Views over Meath Gardens
- Well-Presented Throughout
- Open-Plan Kitchen / Living Space
- Close to Mile End Station and Victoria Park
- Available 2nd of March 2026
- Furnished

Modern, well-proportioned and well-presented throughout, this property features a spacious open-plan kitchen and living / dining space, leading out to a balcony with glorious views over the leafy Meath Gardens. The bedroom is a good-sized double and the apartment is completed by a contemporary main bathroom and plenty of internal storage.

Tay Court forms part of a well-maintained development that is also located close to Regent's Canal, some popular local pubs and the amenities of Roman Road. Access towards Shoreditch and the City is straightforward via regular buses through Bethnal Green.

Ideally suited to a couple or single professional, this property is offered furnished.

EPC Rating B  
Council Tax Band C



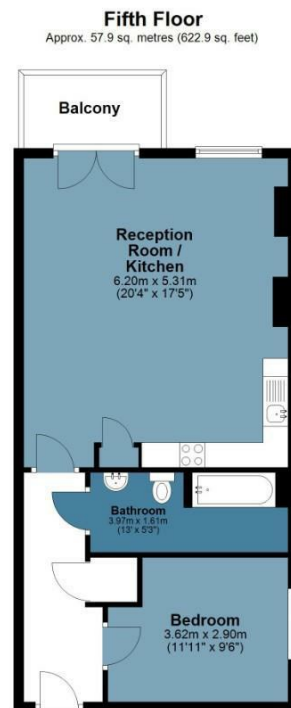




## Meath Crescent

Approx. Gross Internal Area 57.9 Sq M ( 622.9 Sq Ft )

BUTLER & STAG



Measurements are approximate and for illustration purposes only. While we do not doubt the accuracy and completeness, we advise you conduct a careful independent assessment of the property to determine monetary value.  
© @modephotouk www.modephoto.co.uk

IMPORTANT NOTICE - These particulars have been prepared in good faith and they are not intended to constitute part of an offer or contract. We have not performed a structural survey on this property and the services, appliances and specific fittings have not been tested. All photographs, measurements, floor plans and distances referred to are given as a guide and should not be relied upon.

BUTLER & STAG

☎ 020 8102 1236

🏠 508 Roman Road, Bow, London, E3 5LU

✉ bow@butlerandstag.com

[www.butlerandstag.uk](http://www.butlerandstag.uk)